

Poole CVS *News*

November 2013

Contents

Community

[Bourne Jobs Hub](#)

[Volunteering](#)

[DBS](#)

[Criminal Justice](#)

[Justice Data](#)

[Inst. for Youth Work](#)

Profile

[Helen Ward \(PSAAC\)](#)

Governance

[Trustees](#)

[Association of Chairs](#)

Funding

[Fundraising](#)

[Local funding](#)

[Impact measurement](#)

Health

[Health profiles](#)

[NHS England info](#)

[Winter Warmth](#)

[PH Dorset](#)

[Bournemouth University](#)

IT

[Data Protection: BYOD](#)

Your News

[Autism Wessex](#)

[Home-Start SE Dorset](#)

[Poole Town Network](#)

[BCHA](#)

[Infectious Academy](#)

...and finally

Welcome

to the November edition of Poole

CVS News. A key theme of this month is the effective governance of voluntary organisations.

November begins with Trustees Week from 4 to 10

November ([page 5](#)), an annual event which aims to put the spotlight on the thousands of committee members who are the backbone of the voluntary sector. A lot of the work that trustees undertake and achieve does not receive a lot of public attention, unless things go wrong. Sometimes governance is an afterthought, with some voluntary organisations putting more emphasis on service delivery, but the two should be the same; with effective governance you will have an effective organisation.

The Association of Chief Executives of Voluntary Organisations (ACEVO) has produced a report covering many of these issues ([page 5](#)). A key recommendation of the report is for organisations to implement time limits for serving trustees to ensure that new skills and experience are sought and committees do not stagnate. I and some other colleagues are guilty of this - staying on committees for too long; this is something we should act on.

November concludes with Poole CVS's AGM (*please see details below*) to which all readers are invited. This year we have two really good guest speakers, who will build on these themes:

Chris Mills: Trustee recruitment and committee performance

Helen Mortimer: Fundraising for small to medium-sized voluntary groups.

Christopher Beale, CEO, Poole CVS

Poole CVS/VC Annual General Meeting

Wednesday 27 November 2013 from 1.30pm-4.30pm

Salvation Army Hall, 2 New Orchard, Poole BH15 1LY

To book :

Tel: *Evelyn Price 01202 682046*

Email: *evelyn.price@poolecvvs.org.uk*



Community

Bourne Jobs Hub



Carrie Smith, from the volunteer centre at Poole CVS, has been co-ordinating the Bourne Jobs Hub project for the past six months. This community initiative, held at [Rossmore Library](#), has been so successful that hubs are now being considered for other areas.

The hub, which is independent from the Job Centre, provides help with job searching, CV writing, interview skills and filling out application forms – all in a relaxed, friendly environment, with free internet access provided as well.

As a result of the support and advice given, 33 people have secured interviews, with 25 of those being offered a job. Others have taken up volunteering or attended various training courses. Feedback from users has been positive.

carrie.smith@poolecvs.org.uk



[return to contents](#)

Volunteering

Research is proving what most of us already know – that volunteering is not only good for your soul, it is also good for your health. It turns out that helping others can help protect [older volunteers](#) from high blood pressure and that [volunteer adolescents](#) have healthier hearts.

[Reach Volunteering](#) has an impressive track record of matching skilled, business and professional volunteers with the charities that need their expertise.

In 2014, it will be launching iReach online, creating what CEO Janet Thorne describes as, “the Match.com for charities”. iReach aims to match 10,000 volunteers to charities by the end of its third year.

Reach was awarded £50,000 from the government’s [Innovation in Giving](#) fund to develop the project.

Also, read about work being carried out by the Institute of Volunteering Research into the opportunities and challenges of [micro-volunteering](#). More information about micro-volunteering can be found on the [Help from Home](#) website.

DBS

There are many inappropriate requests for free-of-charge volunteer Disclosure and Barring Service (DBS) checks. These “*create a financial burden on other fee-paying applicants, and are in contravention of the RB Conditions of Registration*”.

Read all about it in the October 2013 issue of [DBS Disclosure News](#).

[return to contents](#)

Criminal Justice

“Reoffending rates remain stubbornly high, with nearly half of all UK prisoners re-offending within a year of their release. This partly explains why the prison population has more than doubled over the past twenty years.” NPC

“The Government has launched its [Serious and Organised Crime Strategy](#) which outlines the role of the voluntary and community sector (VCS) and makes it clear that for the strategy to work, statutory partners will need to work with the sector. Local partnerships dealing with local issues and engaging with the communities affected, is key to helping tackle serious and organised crime.” Read [NAVCA’s briefing on the strategy](#).

The Home Office will establish a new Voluntary, Community and Social Enterprise (VCSE) sector group which will include representatives from the Association of Police and Crime Commissioners, the Ministry of Justice, the NCA, charities and other non-governmental organisations.

[return to contents](#)

Justice Data

Earlier this year, Justice Secretary, Chris Grayling, introduced reforms to reduce re-offending, based on payment by results (PBR). Although the PBR model does raise concerns, it also offers more opportunities for the voluntary and community sector (VCS) to become involved. For this involvement to be viable, the VCS needs access to relevant offending data and, as such, the Ministry of Justice is running a pilot from April 2013 - end March 2014, the [Justice Data Lab](#) which enables organisations working with offenders to access central re-offending data. The lab will produce regular statistics. Those for the period April-October 2013 can be found [here](#).

Through the Gate



[Through the Gate](#) is a collection of articles from 2005 to the present day, highlighting ways in which the criminal justice sector is changing in response to the new commissioning environment and how charities are assessing the impact of their services to improve what they do.

Quotation

I don't know what your destiny will be, but one thing I know: the only ones among you who will be really happy are those who have sought and found how to serve.

attributed to Albert Schweitzer: doctor, missionary, philosopher and musician

[return to contents](#)

New!

The Institute for Youth Work

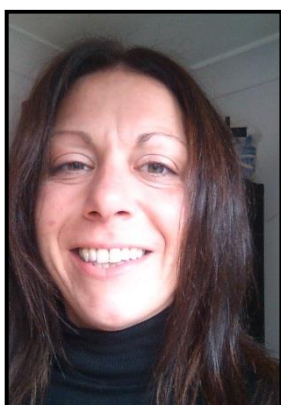
A long-awaited new organisation for youth workers, the [Institute for Youth Work](#), has recently opened its doors to members. It is aimed at youth workers with experience at all levels, from volunteer through to fully qualified. Members will have access to a wide range of resources to enhance their professional development, keep abreast of policy developments and debate their ideas.

The institute is being supported by the National Youth Agency until it becomes self-resourcing through membership.

[return to contents](#)

Profile

Helen Ward



Helen is the centre manager of [Parkstone Sports And Arts Centre For Young People](#) (PSAAC).

Previously a freelance artist educator and a teacher, she is passionate about encouraging young people to engage in a variety of positive activities such as football, skating, badminton, dodge ball, tennis, in-line skating etc. The list seems

endless! Helen says, "Choice is important. We want to provide our young people with the best possible engagement opportunities outside of school hours, and to help them develop into great grown-ups."

Helen has experience, spanning more than a decade, of working with young people in various areas of Dorset, including a project with "at-risk" teens at Durlston Castle where, with her guidance and encouragement, each produced a book on a topic of interest to them, the books being exhibited at Swanage Library before becoming the treasured personal possessions of the young authors.

In Bournemouth, Helen has worked in various children's centres, schools and community centres, hosting art workshops and, in Poole, one of her many activities involved running an outreach project at Rossmore Community Library for 8-12 year olds.

Despite the financial difficulties currently being experienced by PSAAC and so many other small organisations, Helen says, "PSAAC has the passion and dedication to ensure that our communities do not miss out." Well done, Helen!

[return to contents](#)

As centre manager, Helen has ensured that children of all abilities can be catered for, including those with various conditions such as autism spectrum disorders, Asperger syndrome, ADHD, dyslexia, asthma, challenging behaviour, visual impairment and hearing difficulties. All children are welcome at PSAAC - Helen has had the necessary training to enable her to cope with the additional needs of children and to pass her knowledge and experience on to other staff. Opportunities are also provided for participants of the Duke of Edinburgh Award scheme to volunteer their services.

Tel: 01202 717326
admin@psaac.co.uk

Governance

Are you a trustee of a charity?

Do you fully understand the responsibilities of the position that you hold?

Effective governance is central to steering charities through the everyday challenges that they face.

Responding to evidence of increased concern over governance-related issues, the [ACEVO](#) Governance Commission was established last year to review the state of governance in the charity sector. During 2012/13, ACEVO received a **40% increase in governance-related enquiries**.

Their report, [Realising the potential of governance](#), focuses on three main areas: understanding roles and responsibilities; appraisal and accountability; board management.

Key recommendations included:

- Charities should ensure that they have processes for appraisal of trustees, individually and collectively, as well as for the chief executive.
- Boards should consider implementing defined-term limits for trustees, staggered to ensure an appropriate rate of turnover.

One ex-trustee of a small charity explains why he resigned and gives his opinion on [how to appoint a strong board and make the best use of their skills](#).

Also, don't forget about the Charity Commission website where you can:

- **read** information about [what it means to be a trustee](#).
- **listen** to various podcasts on trusteeship via [You Tube](#).



[Trustees' Week](#) is an annual event to emphasise the great work that trustees do. Amongst the younger generation, only 0.5% of 18-24 year olds in England and Wales are trustees.

[Young Charity Trustees](#) (YCT) aims to change this and is also encouraging young people to 'spread the word' by becoming YCT ambassadors.

Association of Chairs

New!

Anyone who chairs a not-for-profit organisation, whether it be a charity, voluntary organisation, community group or a housing association – can now benefit from support given by the newly-formed [Association of Chairs](#) (AoC) which has also been awarded charitable status.

Networking events will ensure that chairs can share experiences with others in a similar position.

[return to contents](#)

Funding

Fundraising

Do you need to understand more about fundraising for your community project but don't have much time?

The [Institute of Fundraising](#) currently has a programme of activity to support small charities to fundraise more effectively. This includes face-to-face training, online learning, mentoring, and a toolkit. As part of this, they have created a series of short videos called [The Five Minute Fundraiser](#). The videos give a snapshot of the key principles of successful fundraising, including topics such as: Fundraising for events - Introduction to Gift Aid - Developing a fundraising strategy - The ethics of fundraising.

Local funding

Read all about the [Dorset Education Fund](#), administered by Dorset Community Foundation.

It is offering grants of between £500 and £1,500 to support education, learning and training activities for Dorset residents of all ages, from 0 - 65+ years.



Dorset
Community Foundation

[return to contents](#)

Impact measurement

What is it and why is it important?

Impact measurement basically means identifying what has happened, good or bad, as a result of something that you or your organisation has done, both the short- and long-term effects.

It is important because, with ever-increasing budget restrictions, funders - who themselves are often being forced to cope with smaller budgets – frequently have to make difficult decisions about where to target their funding. With charities also facing rising demands and reduced incomes, it is increasingly important that they are able to prove their effectiveness to funders by measuring the impact of their work. This can also have the benefit of raising standards.

Measuring impact takes time and money and, for many small organisations, this is seen as a real challenge. In addition, there is often a lack of adequate knowledge of the processes involved and there are inconsistencies in levels of practice and understanding.

An [article by Cath Lee](#), CEO of the [Small Charities Coalition](#), makes a case for keeping it simple.

Help is at hand!



The charity, [New Philanthropy Capital](#) (NCP), has expressed concern that small charities should not face disproportionate demands that outstrip their capacity. It is leading *Inspiring Impact*, a programme that aims to provide clarity on what good impact measurement practice looks like.

The [Code of Good Impact Practice](#) provides guidelines for practices and principles to follow.

[return to contents](#)

Health

Health Profiles

Public Health England [PHE](#) recently published health profiles of local areas throughout England. The profiles “provide a snapshot of the overall health of the local population, and highlight potential problems through comparison with other areas and with the national average.”

The profiles, which show that the health of people in Poole and Dorset is generally better than the England average, are produced at local authority level and are intended for use by local government, community groups and health services.

You can find a wealth of information about the [Health Profiles programme](#) as well as the health profile of your local authority area on the PHE website.

[return to contents](#)

NHS England

In an endeavour to increase transparency within the NHS and to improve services for patients, NHS England now has a [consultation and engagement site](#) where you can find information relating to both current and previous consultations. To take part in the consultation about a people-powered NHS, you can complete the online survey [here](#). The closing date for this consultation is March 2014.

Winter Warmth

Last winter there were 24,000 excess winter deaths (EWD), most of which were preventable and occurred amongst those aged 75 years and over. Around 20,000 were linked to respiratory and circulatory diseases, dementia and Alzheimer’s disease. The [Cold Weather Plan for England](#) has now been published.



In addition, PHE has produced various action cards, e.g. the [Voluntary and Community Sector Action Card](#), which provide advice on preparation for the effects of winter weather on people’s health.

Other useful reading, aimed at the over 60s, is Dorset CCG’s booklet [Your helpful guide to keeping warm, well and safe this winter](#).

[return to contents](#)

Public Health Dorset: October update

In Poole, the team has been busy:

- developing opportunities in Bourne Valley for young people to use local facilities which will help them become more active
- working with Dorset Fire and Rescue to raise awareness of smoking in the home, and also developing a pilot to identify community champions who will encourage local residents to take part in lifestyle initiatives.
- carrying out a health assessment profile in Turlin Moor to look at differences in health in the area. This will help guide what public health and other services need to be commissioned in the future.

A review of childhood obesity is also about to take place in Poole to find out if there is a problem with obesity, the extent of the problem and where efforts should be focused.

paul.compton@dorsetcc.gov.uk



[return to contents](#)

Bournemouth University

Carer and Service User Partnership

Service users and carers, who have used a range of services, including: learning disability, drug and alcohol, mental health and physical disability, are helping to provide a unique perspective to students working towards a Health and Social Care degree at Bournemouth University. Research has shown that their input increases empathy and improved communication skills, as well as a greater understanding of care impact. Find out more [here](#).

Poole CVS News

- Do you rely on having Poole CVS News forwarded to you?
- Join our [mailing list](#) to receive it direct.
- To unsubscribe, please click [here](#).
- The next newsletter is due in **January**. Please send any articles for inclusion in the newsletter to evelyn.price@poolecv.org.uk, by **Friday 20 December 2013**, making sure to include the word NEWSLETTER in your email heading.

[return to contents](#)

IT

BYOD

Do you sometimes check your work emails from your smart phone?

Have you read work-related documents on your tablet?

Have you used a memory stick to transfer work-related data?

Bring your own device (BYOD) is a term which refers to employees using their personal computing devices (e.g. smart phones, tablets, memory sticks) for work purposes.



Users connecting their own devices to the IT systems of an organisation should be fully aware of their responsibilities under the Data Protection Act. Many organisations still lack strategies regarding mobile device management (MDM).

As data security is a real challenge, all organisations should have an Acceptable Use Policy. Read [Bring Your Own Device \(BYOD\)](#) on the [ICO website](#).

Having a policy is useless, though, unless there is regular auditing and on-going monitoring to check for compliance. The PowerPoint presentation by Simon Rice, a technology manager from the ICO, on [Mobile Government: Embracing New Technologies and Enhancing New Ways of Working](#) is informative.

Other useful reading is:

[Guide to Data Protection](#) ; [Data Sharing Code of Practice](#) ; [A Practical Guide to IT Security](#)

Over the last couple of years, various councils and healthcare trusts have been fined by the Information Commissioner's Office (ICO) for a variety of data protection offences:

- A probation officer disclosing personal information
- A community-based employee who had not been given remote access to the employer's computer system had her USB stick containing unencrypted, confidential information stolen.
- Computers sold on the internet were discovered to contain confidential information about patients, when it had been believed that the hard drives were wiped clean.
- A man responsible for maintaining a GP referral service stole the information and used it for personal gain.

Laughter

is the sun that drives winter from the human face.

Attributed to Victor Hugo, French poet



[return to contents](#)

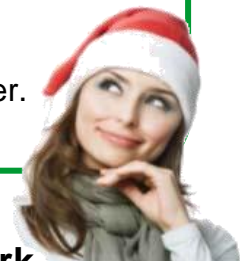
Your News

Autism Wessex

Do some Christmas shopping and support Autism Wessex at the same time!

Autism Wessex is raising funds by holding a unique shopping event on 4 December 2013. Read further details [here](#).

They are also planning a Fun Run at Moors Valley Country Park on 29 December. Enjoy the fresh air and burn off all those excess Christmas calories!



Home Start South East Dorset

[Home-Start South East Dorset](#), a voluntary organisation offering support, friendship and practical help to families at home with at least one child under five years of age, is running a **Preparation Course for Prospective Volunteers** in the New Year.

Home-Start can be a lifeline to parents just when it is needed most. If you are a parent or grandparent willing to spare a few hours a week to help, they will be very pleased to hear from you.

Poole Town Network

A meeting of the recently-formed Poole Town Network is being held at Poole Museum Learning Centre on 3 December 2013. Come along and listen to their guest speaker, a member of the Poole [Healthwatch](#) team, who will explain how they can help you to get the best out of your local health and social care services.

Tel: 07814 749546
daniel.biggs@poole.gov.uk

BCHA and the Purple Teardrop Campaign

Modern-day slavery exists within the UK but, sadly, often goes unnoticed. Because of the growing need to raise awareness, both BCHA and the [Purple Teardrop Campaign](#) are hosting a conference on **10 December at Boscombe Salvation Army, Bournemouth**, to provide professionals with an insight into human trafficking plus how they can recognise and respond to the signs. The cost is well worth it.



events@bcha.org.uk

Infectious Academy

Outreach worker, Sally Hicks, was recently given a Community Hero Award of £666 by the Hall & Woodhouse Brewery for [her work](#) with the local community.



[return to contents](#)

.....and finally,

Staff

Chief Executive

Christopher Beale
chris.beale@poolecvs.org.uk

Accounts Administrator

Kevin Eaton
kevin.eaton@poolecvs.org.uk

Administrative Co-ordinator

Evelyn Price
evelyn.price@poolecvs.org.uk

Organisational Development Advisor

Daniel Biggs
daniel.biggs@poolecvs.org.uk

Volunteer Centre Broker

Gill Harris
gill.harris@poolecvs.org.uk

Project Co-ordinator

Carrie Smith
carrie.smith@poolecvs.org.uk

We Need That! Co-ordinator

Monique Munroe
1stwrites@writes1st.plus.com

Poole CVS

01202 682046

Volunteer Centre

01202 675100

- [Annual Local Compact Survey Results 2013](#) : Detailed information on how local partnership agreements are working
- All about the [Sustainable Communities Act](#)
- [International accounting standards](#) are being considered for voluntary and community sector organisations.
- [HMRC](#): New and updated charity guidance
- [Putting Patients First](#): The NHS England Business Plan for 2013/14 – 2015/16. [In summary](#) or on [You Tube](#)
- [The Small Charity Index](#) provides a monthly 'pulse of the sector' report.
- [NAVCA's response](#) to a Cabinet consultation of making procurement more accessible to SMEs
- [Lobbying bill](#) – follow NCVO's blog and find out what it means for charities
- [Bournemouth University Carer & Service User Partnership](#): including service users and carers in training

Loan of Equipment

Don't forget that we can loan you the following equipment:

- ✓ Flip chart stand
- ✓ Laptop
- ✓ LCD projector
- ✓ Projector screen
- ✓ Display boards

Contact Poole CVS